

Nominal power **90 ÷ 3500 kW**

Design pressure **5 bar**

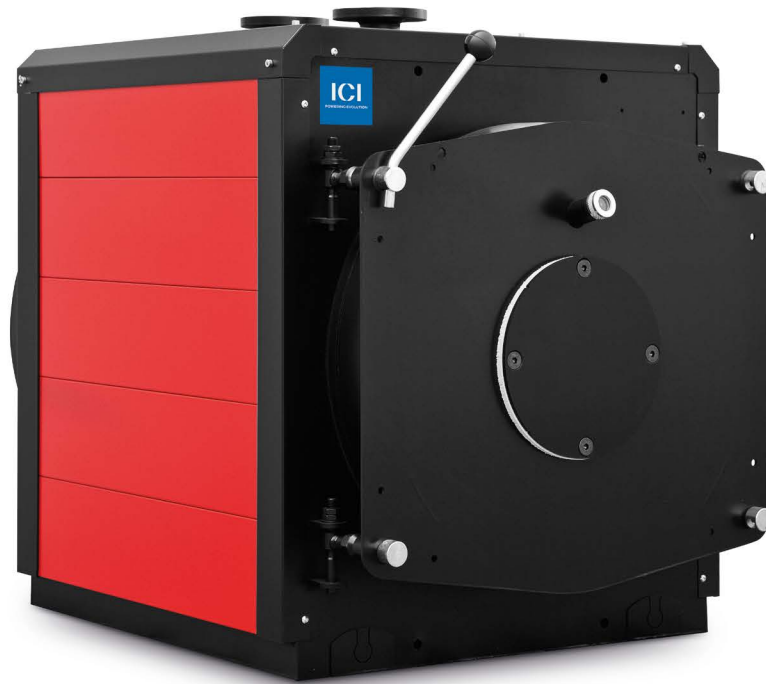


# REX

Reverse flame boiler

# ICI

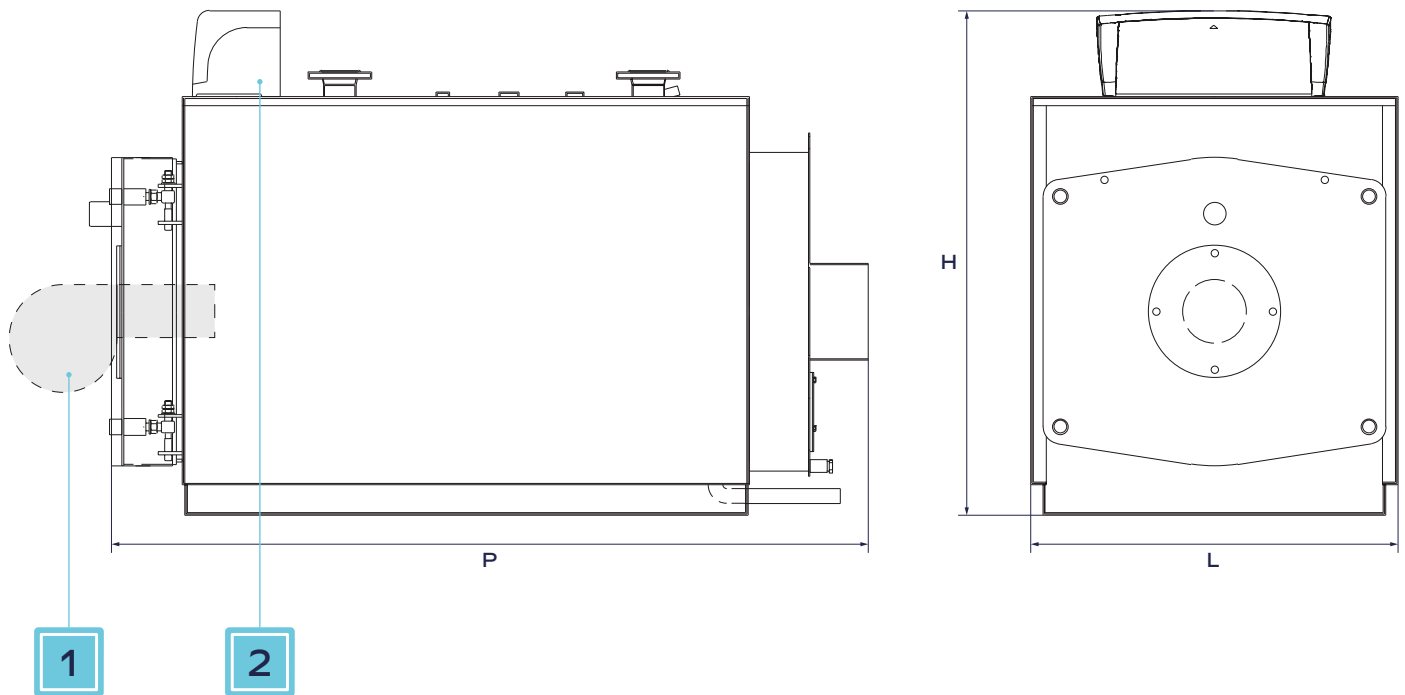
POWERING EVOLUTION



Reverse flame boiler with cylindrical furnace completely closed on the rear side by a dished end supported by a fully submerged stub pipe. The boilers can be used with forced draft burners for the operation on liquid or gaseous fuels. These boilers are designed to be used in systems with water temperature between 60 and 100°C (safety thermostat set at 110°C).

## TECHNICAL DATA

REX	Heat output	Design pressure	100% Productivity		Thermal capacity	
			REX	REX F	REX	REX F
	kW	bar	%		kW	
<b>9</b>	90	5	92	> 95	98	95,2
<b>10</b>	100	5	92	> 95	109	105,6
<b>12</b>	120	5	92	> 95	130	126,5
<b>15</b>	150	5	92	> 95	163	157,8
<b>20</b>	200	5	92	> 95	216	210
<b>30</b>	300	5	92	> 95	325	315,5
<b>40</b>	420	5	92	> 95	455	420
<b>62</b>	620	5	92	> 95	672	649
<b>75</b>	750	5	92	> 95	813	786
<b>85</b>	850	5	92	> 95	921	891
<b>100</b>	1020	5	92	> 95	1106	997
<b>120</b>	1200	5	92	> 95	1301	1259
<b>130</b>	1300	5	92	> 95	1409	1364
<b>180</b>	1800	5	92	> 95	1950	1885
<b>240</b>	2400	5	92	> 95	2600	2518
<b>300</b>	3000	5	92	> 95	3250	3142
<b>350</b>	3500	5	92	> 95	3792	3670



## Optional accessories

1. Burner
2. Electrical panel

## DIMENSION

REX	H	L	P	Empty weight		Total volume
				REX	REX F	
	mm	mm	mm	kg		l
<b>9</b>	1030	756	1164	258	266	123
<b>10</b>	1030	756	1164	258	266	123
<b>12</b>	1030	756	1164	258	266	123
<b>15</b>	1080	806	1409	346	357	172
<b>20</b>	1080	806	1409	346	357	172
<b>30</b>	1180	906	1659	475	489	300
<b>40</b>	1190	943	1911	584	600	360
<b>62</b>	1380	1166	2261	963	981	645
<b>75</b>	1510	1296	2285	1205	1230	855
<b>85</b>	1510	1296	2285	1205	1230	855
<b>100</b>	1660	1446	2513	1843	1880	1200
<b>120</b>	1660	1446	2513	1843	1880	1200
<b>130</b>	1660	1446	2513	1843	1880	1200
<b>180</b>	1746	1470	3096	2750	2815	1650
<b>240</b>	1876	1600	3480	3900	3980	2300
<b>300</b>	2146	1870	3480	5200	5300	3150
<b>350</b>	2146	1870	3935	5700	5800	3650

# ADVANTAGES

- **Interconnection with the heating plant:**  
remotization of all operating data via communication protocols. Creation of a synoptic on a dedicated web page for remote telemanagement.
- **Traditional fuels:**  
Methane - LPG - Naphtha - Diesel
- **Clean fuels:**  
Biogas - Biomethane - Biodiesel - Syngas

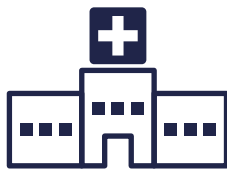
- **Certifications**



# MAIN APPLICATIONS



Industry



Hospital



Food&Beverage



Oil&Gas

# SUPPORT SERVICES

With the new Assistance Services specific to the different types of generators and the impact they have on productivity, ICI Powering Evolution customers can maintain the high efficiency status of their thermal power plants.

## Activities

Each package offers a unique level of service, designed to guarantee:

- A wide range of included services
- Tailored support for specific needs
- Performance analysis and monitoring

Support service activities are grouped into 3 categories:



Basic Support



Active Support



Active Support Plus



# COMPATIBLE COMPONENTS



ETERM PANEL



RETURN T° CONTROL SYSTEM

System for maintaining the temperature difference  $\Delta^\circ$  between supply and return

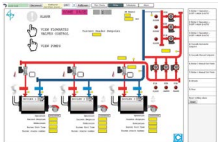


THERMOSTATIC PANEL



SERVICE LEVEL AGREEMENT

19 managed services, 3 levels of offering



MODBUS INTERFACE



PT1000 TEMPERATURE PROBE



ROOM TEMPERATURE PROBE

# ICI

POWERING EVOLUTION

ICI CALDAIE S.p.A.  
Via G. Pascoli, 38  
37059 Campagnola di Zevio  
(Verona) - Italia

[icicaldaie.com](http://icicaldaie.com)  
T. +39 045 8738511  
P.IVA e C.F. 00227490232